



Installation Guide

iPoint - Player

PresentationPoint

Table of Contents

1	INTRODUCTION	3
1.1	PURPOSE	3
1.2	SYSTEM PREREQUISITES	3
1.3	VISUAL BASIC FOR APPLICATIONS	3
1.4	.NET PROGRAMMABILITY SUPPORT	3
1.5	OPERATION	6
2	INSTALLATION	8
2.1	SOFTWARE PACKAGE	8
2.2	INSTALLATION	8
3	USER ACCOUNT CONTROL ON VISTA COMPUTERS	11

1 Introduction

1.1 Purpose

The iPoint player is responsible to play its playlist(s) at the date and time specified.

1.2 System prerequisites

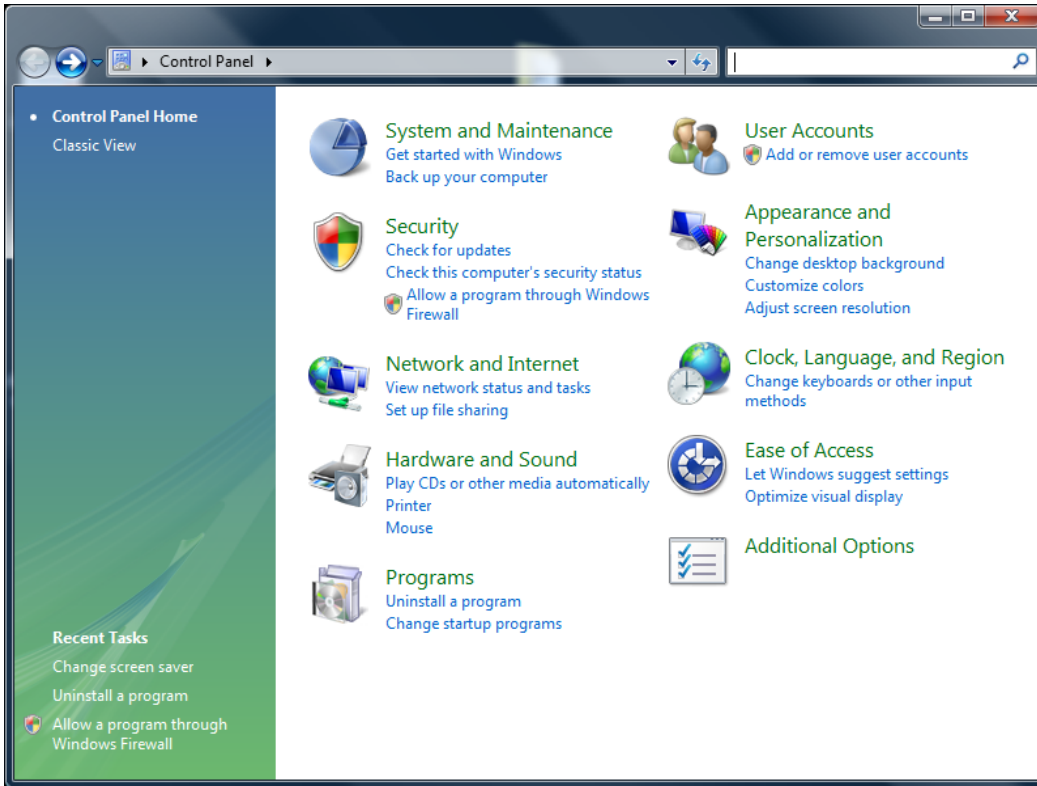
- Windows Server 2003; Windows Server 2008; Windows Vista; Windows XP; Windows 7 (32 and 64 bits)
- Microsoft .NET Framework 3.5 Service Pack 1
- Microsoft Office 2000 or up. (all 32 bits)
- Microsoft Office 2010 (32 bits version only)
- Windows Media Player 9.0 or up
- Adobe Shockwave Player 11.0 or up

1.3 Visual Basic for Applications

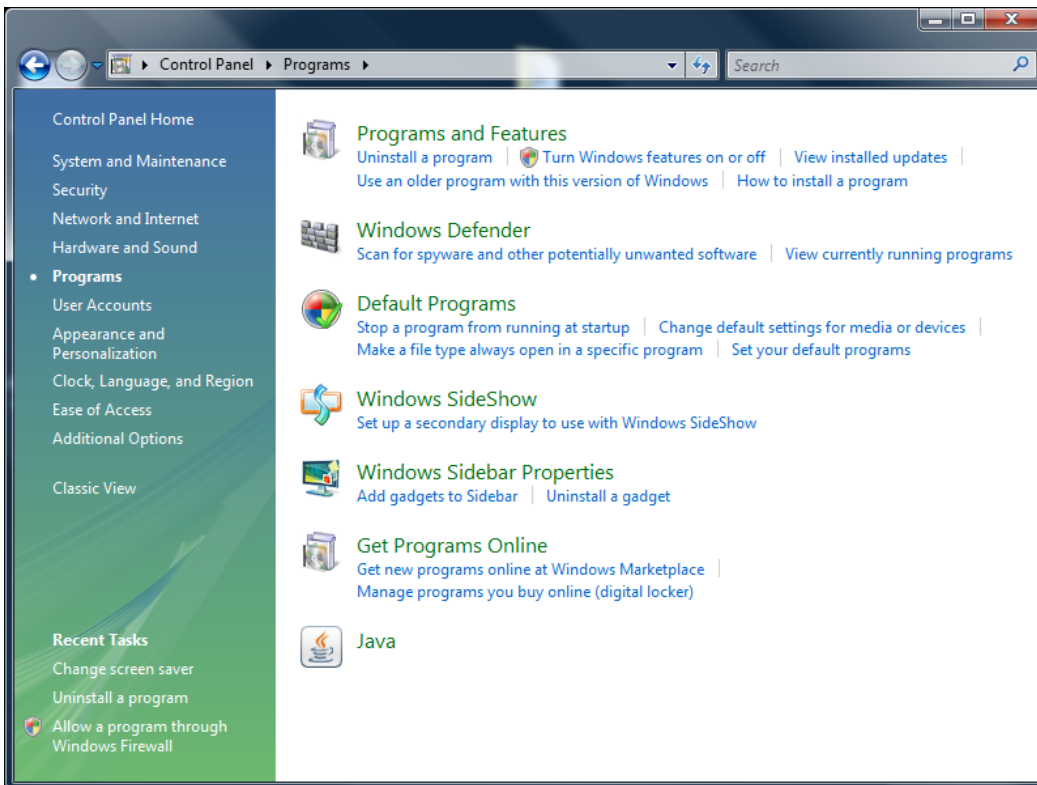
Make sure that the option 'Visual Basic for Applications' is installed during the Microsoft Office setup in the 'Office Shared Features' group. With a default installation is this option present already.

1.4 .Net Programmability Support

When using Microsoft PowerPoint 2003, 2007 or 2010 you have to ensure that .Net programmability support is enabled. To verify this click Start from the Windows menu > Control Panel. This option is there when you run a full installation of Microsoft PowerPoint.

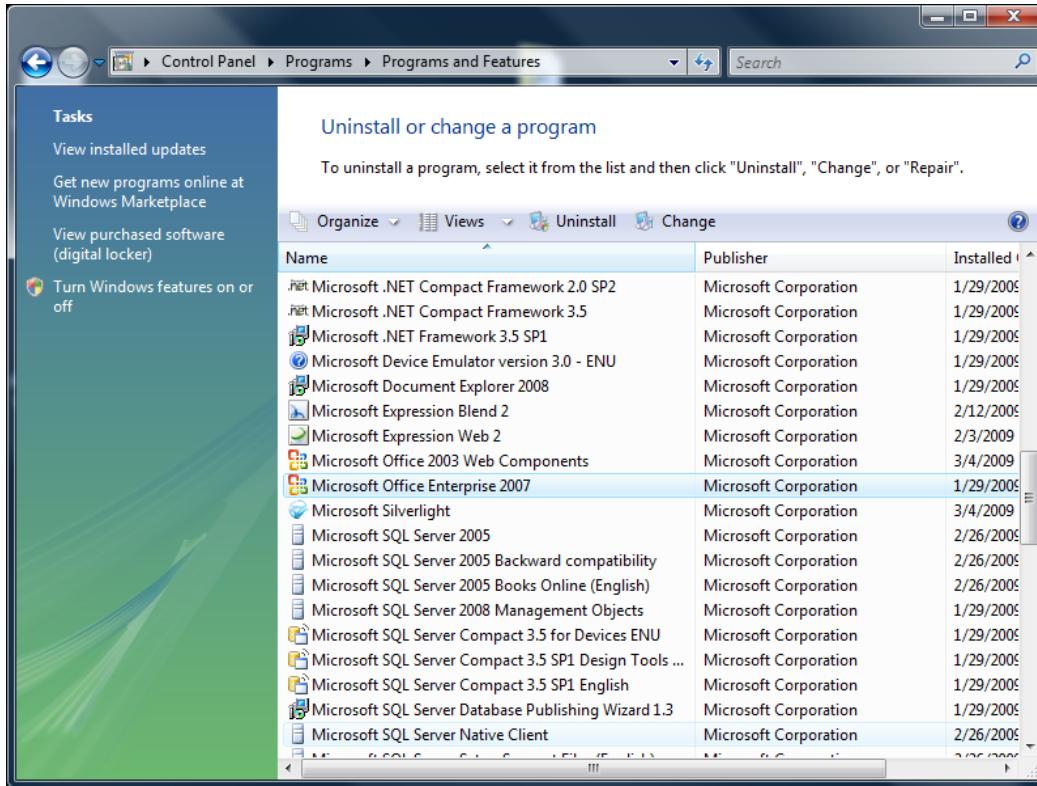


Select Programs



Select

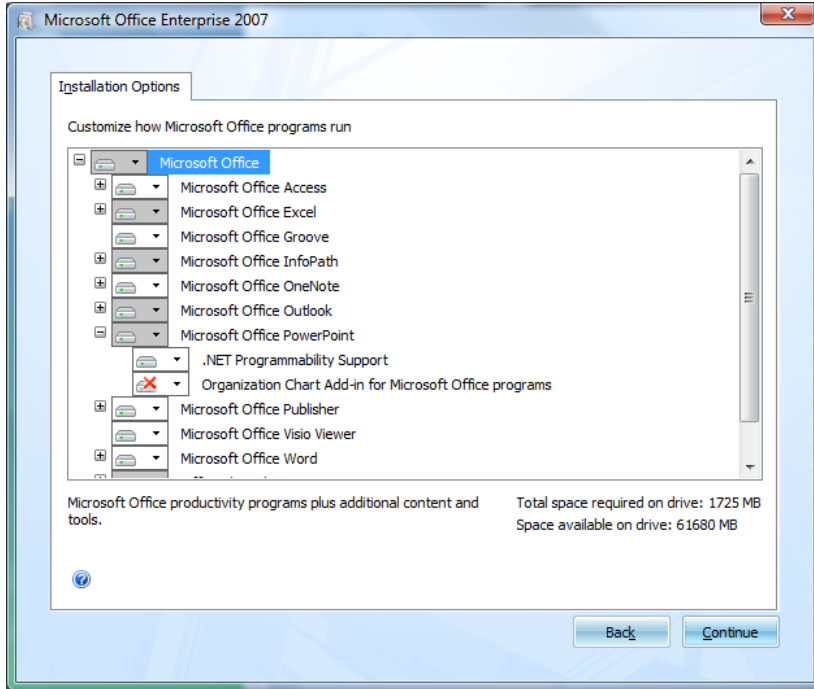
Programs and Features



Locate the Microsoft Office 2003 or Microsoft Office 2007 entry in the list and select it. Now click Change from the top menu.



Select Add or Remove Features and click Continue.



Open the Microsoft Office PowerPoint entry to see its children. Make sure the .Net Programmability Support is installed and available. If it is not available then right click the .Net Programmability Support item and select Run from My Computer. Click Continue to commit the change.

1.5 Operation

There are 3 program operation types for a player.

Program type	Description
Dedicated player	A dedicated player will automatically launch the player application when a computer is started and logged on. Select this mode if your player computer is not doing anything else then running the iPoint player, e.g. a monitor welcoming people at the reception desk.
Manual player	The computer is used for other applications then iPoint player as well and the iPoint player is started manually whenever its functionality is needed.
Screensaver	The screensaver type will start the player application as a Windows screensaver. This will happen only when the computer becomes idle and Windows is starting the selected screensaver.

If you want to run your player application as a dedicated player it is best to turn off automatic updates of Microsoft itself as well as other applications such as Java, flash player etc in order to not disturb normal operations with popup messages of any kind. Also advised is also to remove any icon or shortcut from your desktop.

2 Installation

This topic describes how to install the iPoint player software.

2.1 Software package

The iPoint player software can be retrieved from the PresentationPoint website. Click Software > iPoint > Download from the menus. You can also get it from the PresentationPoint cdrom when ordered. There is no difference in functionality between the trial version and the full licensed version.

2.2 Installation

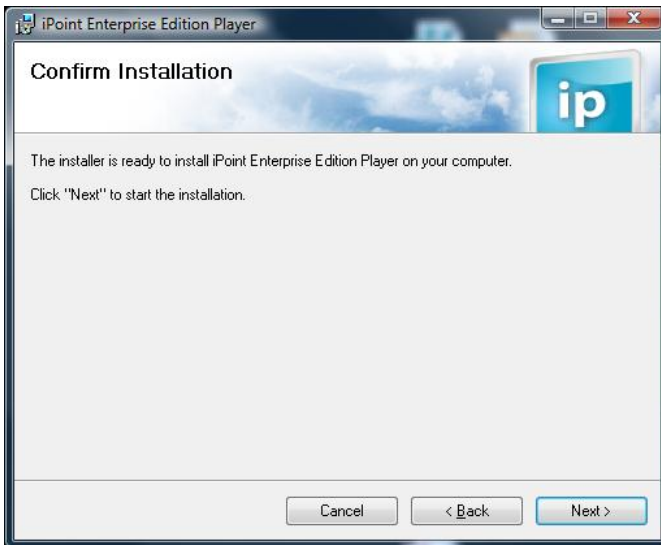
Extract the zip file and start the setup.exe program. This will launch an installer that will guide you through the installation process.



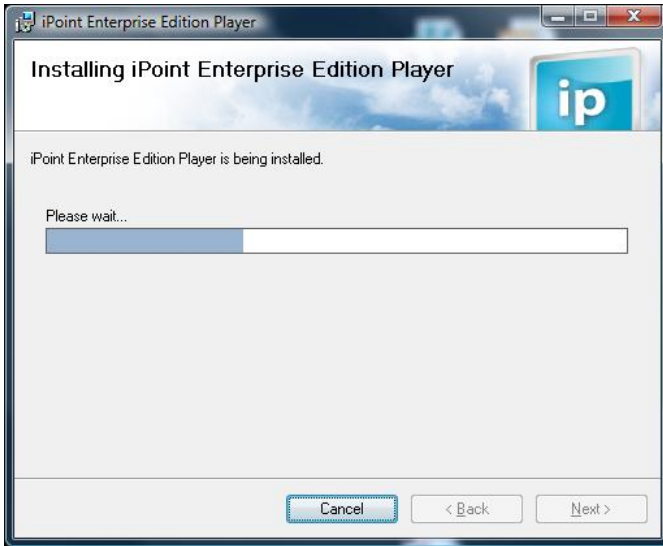
Click Next.



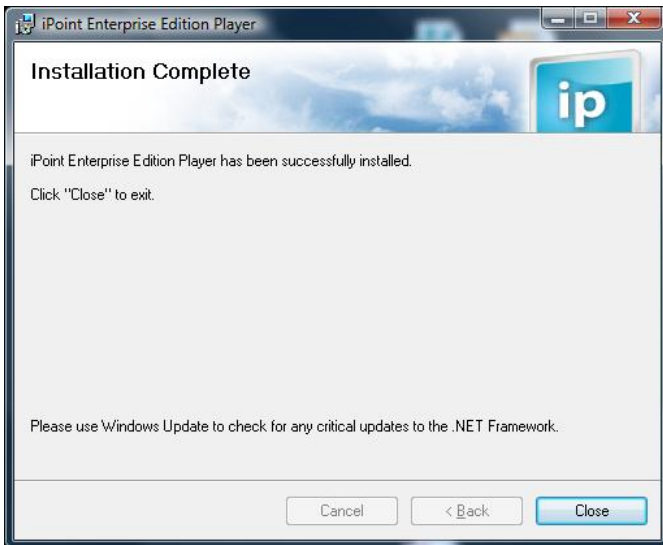
Check the default installation folder and click Next.



Click Next now to start the installation.



The installation process is now running.



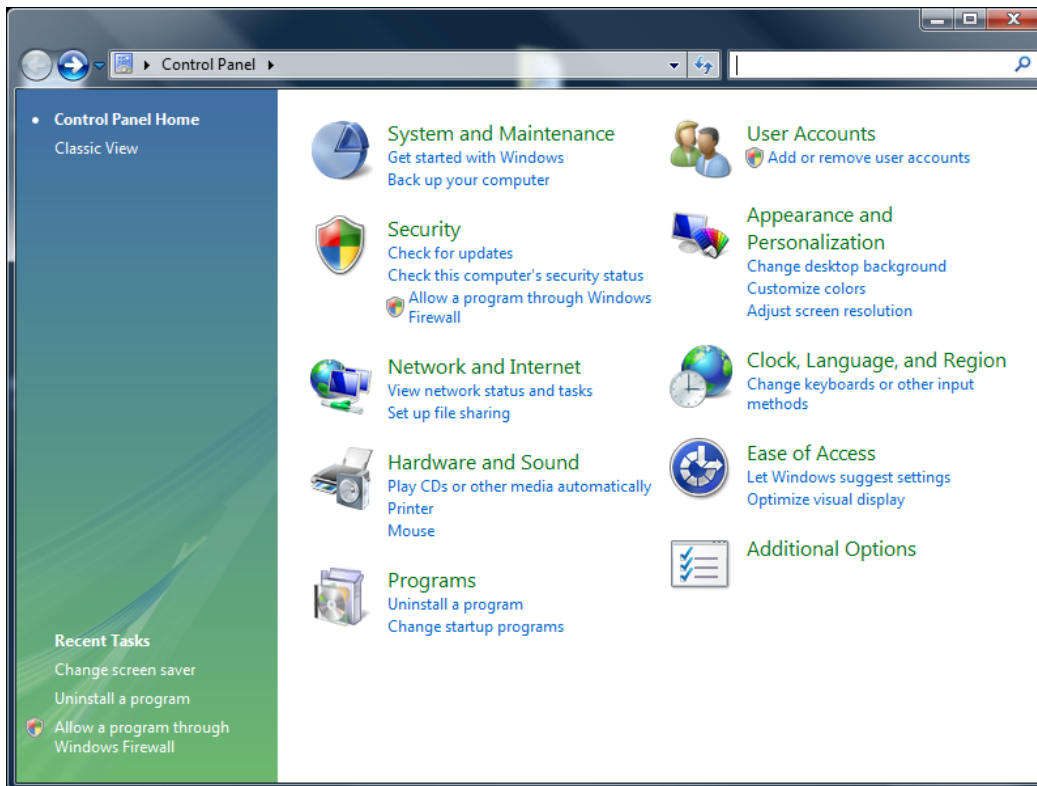
Click Close to exit the installation process.

3 User Account Control on Vista computers

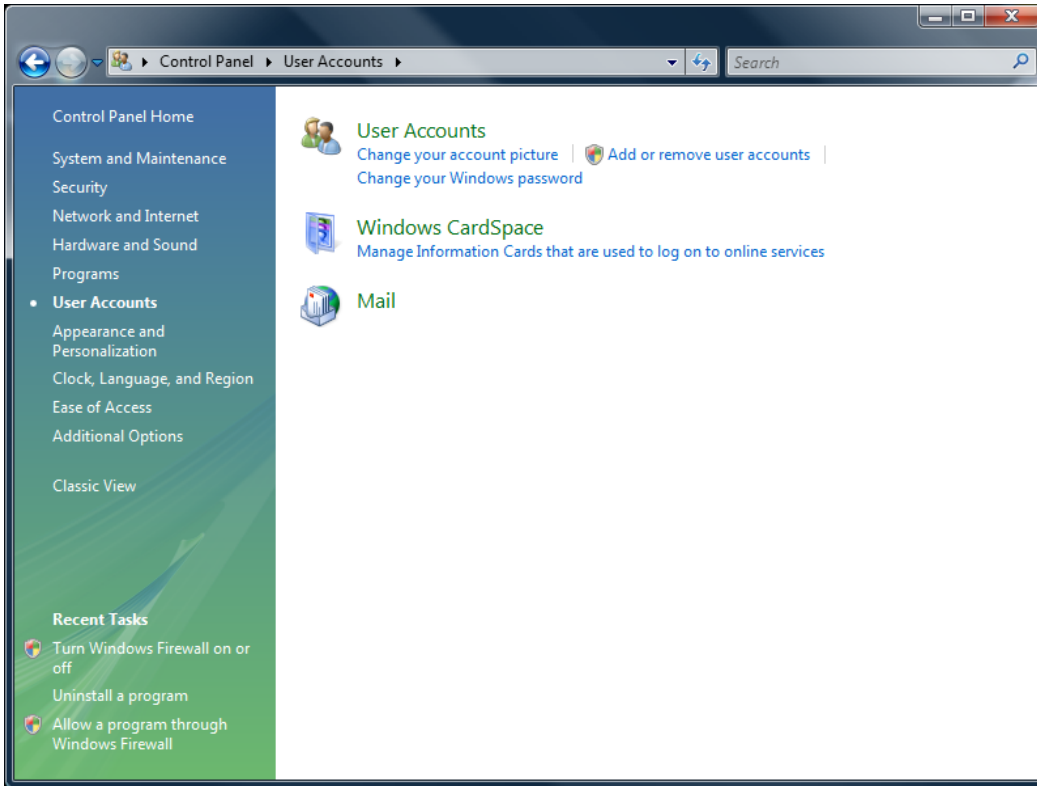
For the best iPoint operations it is advised to turn off Vista's User Account Control. iPoint is controlling your computer by synchronizing the system date and time, sound volume control and much more to ensure full iPoint functionality.

Note: Older versions of the Windows operating systems do not have the User Account Control installed. Therefore you don't need to take further actions.

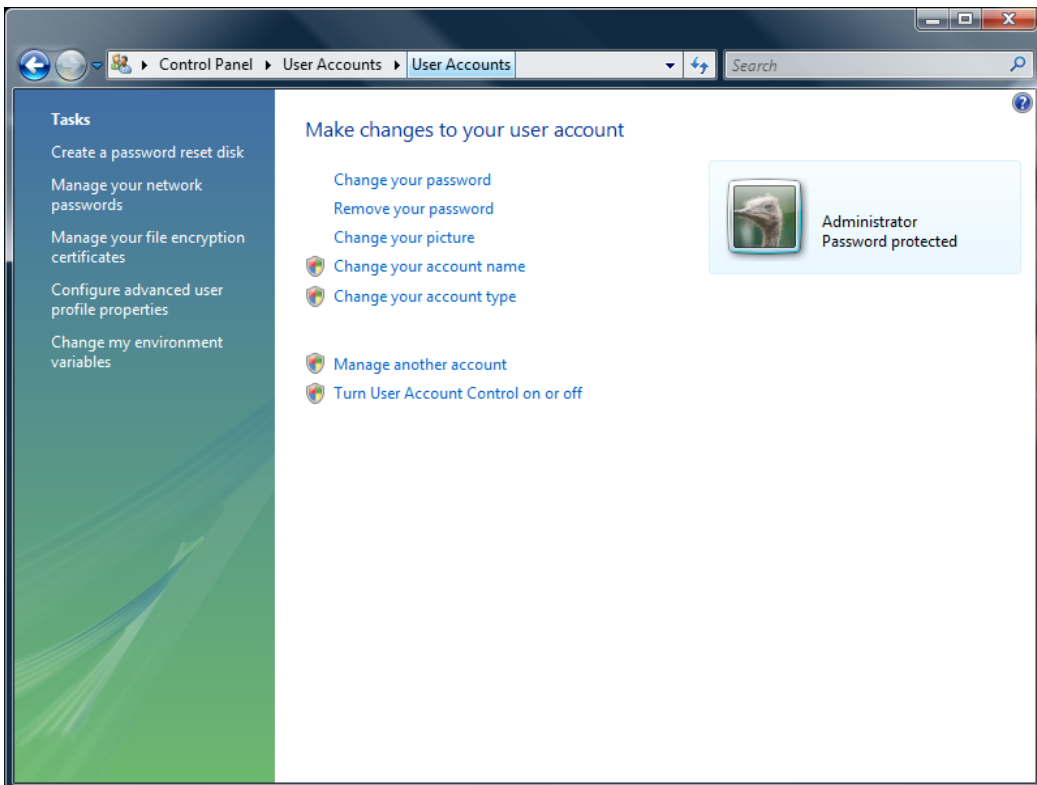
To turn off User Access Control click Start from the Windows menu > Control Panel.



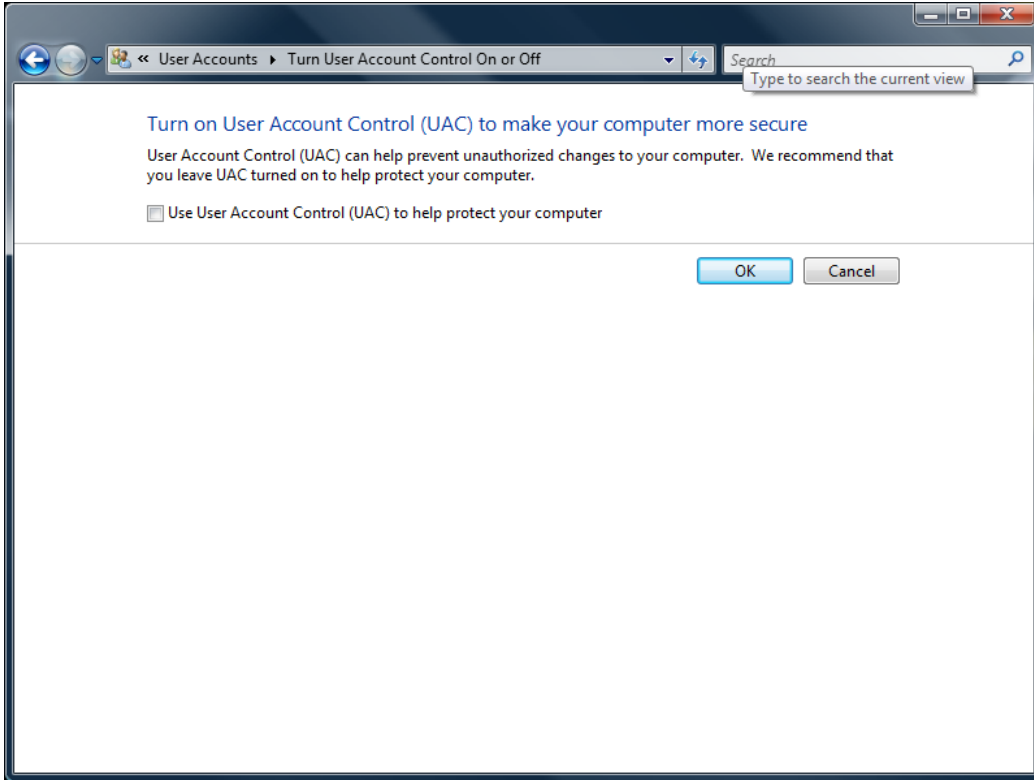
Select User Accounts



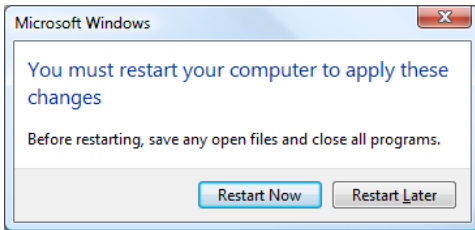
Click User Accounts once more.



Select Turn User Account Control on or off.



Disable the User Account Control here and click OK.



A system reboot is required.